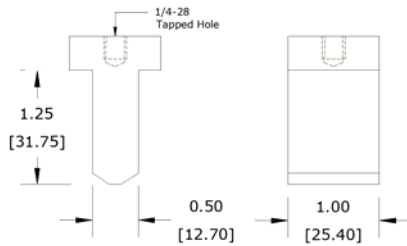


CMCP205 Series Motor Fin Mounts for Accelerometers

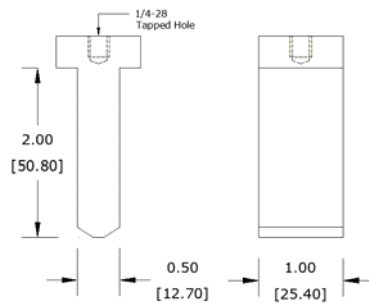
The CMCP205 Motor Fin Mounts provide a mounting location for either magnetically mounted or permanently mounted accelerometers on motors, where the bearing housing is not accessible. The Fin Mounts are machined from 416 Stainless Steel and are adhesive mounted between the cooling fins of the motor. The CMCP205 Fin Mounts are provided in four sizes to accommodate a variety of motors and to keep the amount of required adhesive to a minimum.



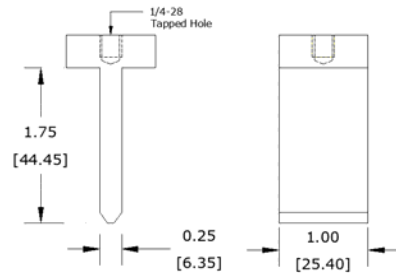
CMCP205-01



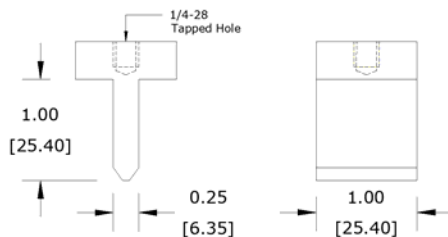
CMCP205-02



CMCP205-03

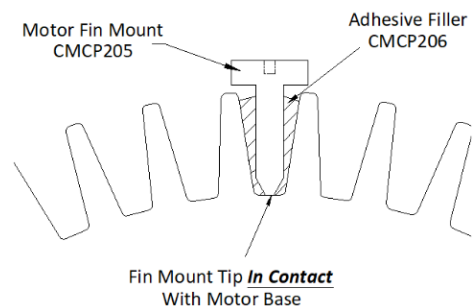


CMCP205-04



CMCP205 Series Features

- For Motor Cooling Fins
- Available in Four Sizes
- 1" (25.4mm) Mounting Surface
- 32 RMS Mounting Surface
- 416 Stainless Steel
- Will Attract to Magnets
- 1/4"-28 UNF Center Hole
- Epoxy Mounted



CMCP206 Adhesive Filler



Features

- 50mL Gap Filling Epoxy
- Anchors Motor Fin Mount to Cooling Fins
- Mounts 5-10 Motor Fin Mounts
- Requires Adhesive Dispenser and Mixing Nozzles

CMCP207 Adhesive Dispenser



Features

- Easily Dispenses Adhesive
- Includes 1:1 Plunger for CMCP206
- Reusable

CMCP208 Mixing Nozzles



Features

- Pack of 12
- For Mixing and Dispensing CMCP206 Adhesive
- Disposable

CMCP214 Cleaner/De-Greaser



Features

- Cleans and Degreases Mounting Surface
- ODC Free
- 15 Ounce Aerosol Can
- Residue Free